

# ARTBOTICS

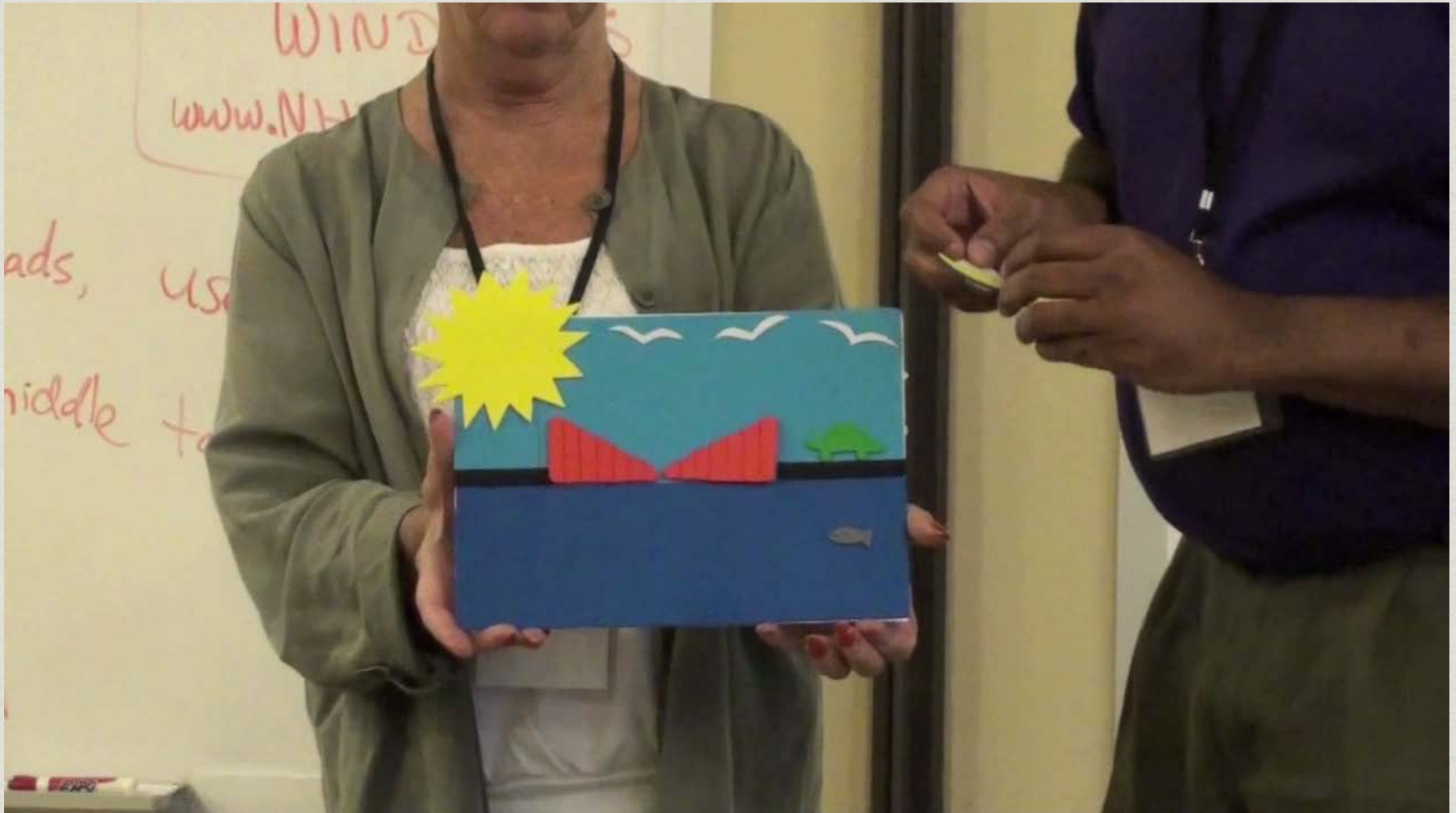
Building an Interactive Kinetic Sculpture



# Interactive, Kinetic Sculptures

- \* Combine all components with art materials to create an interactive, kinetic sculpture
- \* All projects must use at least:
  - \* 1 motor (DC or servo)
  - \* 1 sensor
  - \* You are encouraged to utilize mechanisms!
- \* 2.5D (not quite 2D, not quite 3D) or 3D projects

# Example Projects



<http://www.youtube.com/watch?v=w4650htXE00>

# Example Projects



<http://www.youtube.com/watch?v=6ew87BEmPaA>

# Example Projects



<http://www.youtube.com/watch?v=CAXAY6FYSc>

# Interactive, Kinetic Sculptures

- \* **Do not use glue on any motors or sensors pieces!**
- \* Sticky Tabs and hot glue work great on mechanism linkages
- \* Utilize tape and sticky tabs